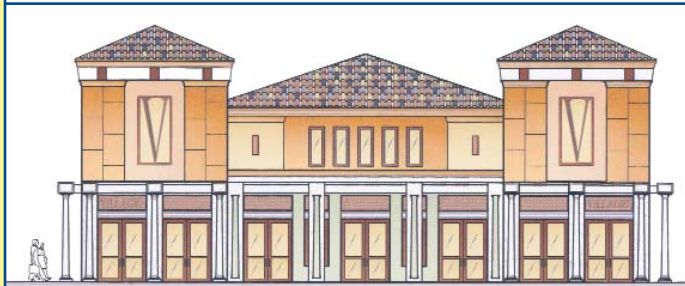


New Full-Service Restaurants to Debut in Sunrise

Two new upscale, full-service restaurants are slated to join the City's already impressive menu of dining establishments. Both will be located in The Colonnade at Sawgrass Mills - an open-air, Mediterranean-style, promenade featuring luxury retailers and restaurants.

P.F. Chang's is currently under construction, and expected to open in fall 2007. The restaurant will offer the brand's appealing combination of attentive service and quality Chinese cuisine - as well as wine and tempting desserts - in a stylish, high-energy bistro setting.

Plans for **Villagio** are now well underway.



Pictured: (Top) Artist's Rendering of P.F. Chang's; (Bottom) Artist's Rendering of Villagio. Both restaurants will be located in The Colonnade at Sawgrass Mills.

Developed by the owners of Carpaccio, the legendary Bal Harbour eatery, Villagio promises to be a stylish, gourmet addition to The Colonnade's restaurant and retail mix. The first Villagio location opened in Coral Gables in 2006, and has earned praise for its refined atmosphere, alfresco dining and wonderful selection of authentic Italian specialties.

P.F. Chang's and Villagio will join the eclectic **Grand Lux Café**, already open in The Colonnade. The restaurant offers extraordinary variety and selection, with flavor profiles ranging from Thai, Malaysian and Caribbean, to classic American and European specialties.

Steven B. Feren, Mayor; Irwin Harlem, Deputy Mayor;
Commissioners Sheila D. Alu, Donald K. Rosen and Joseph A. Scuto



CITY OF SUNRISE
10770 W. Oakland Park Blvd.
Sunrise, FL 33351
(954) 741-2580
www.sunrisefl.gov

PRST STD
US POSTAGE PAID
FT. LAUDERDALE, FL
PERMIT NO. 825



SUNRISE GETS GREENER: FIVE NEW PARKS ON THE WAY

PLUS -
NEW FULL-SERVICE RESTAURANTS TO DEBUT IN SUNRISE

March 2007

SUNRISE GETS GREENER: FIVE NEW PARKS ON THE WAY

Sunrise is known for its array of outstanding recreation amenities. In keeping with that reputation for excellence, a new linear park was recently completed in the City, and plans call for the development of five additional green spaces for residents to enjoy.

THREE NEW PASSIVE PARKS

Sunrise continues to take steps to preserve open space for the enjoyment of City residents. Plans are moving forward on three Sunrise passive park locations chosen by Broward County's Safe Parks and Land Preservation Board as part of their Open Space grant program. Those sites - on the **north side of Oakland Park Boulevard, west of Pine Island Road**; on the **south side of NW 44th Street, west of Pine Island Road**; and on the **east side of Nob Hill Road, south of NW 55th Street** - represent an investment of approximately \$4.5 million in Land Preservation Grants for land acquisition. Design and construction for these three projects is estimated at a total cost of approximately \$7 million.

Broward County has transferred to Sunrise the ownership of these three parcels - totaling

nearly 24 acres. In January 2007, the City contracted with engineering firm Craven Thompson & Associates, Inc., to develop a final management plan for the park locations. Under this agreement, the firm is conducting environmental studies to identify all non-native, invasive plant materials for removal, as well as determine if any natural habitats exist on the park sites. The analysis is expected to be complete in April of this year, at which time design plans for the passive parks could begin.

NEW CHILDREN'S PARK

A new \$1.8 million park, designed specifically for children, will be constructed on property adjacent to the Sunrise Civic Center, near the corner of Oakland Park Boulevard and Josh Lee Boulevard. It will be a safe and exciting place for children to play - and will feature amenities that spark creativity and encourage physical fitness. The children's park would complement the array of family-friendly recreation facilities already located on the Civic Center campus - including an aquatics complex; a gymnasium and athletic club; a theatre and amphitheatre; an art gallery; and the Sunrise Dan Pearl library.

NEW NEIGHBORHOOD PARK IN ORIGINAL SUNRISE

An approximately \$1.75 million park, which has already been funded, will be built at the southwest corner of NW 20 Street and NW 64 Avenue - the current location of the City's Public Works building. The park would complement other family-friendly area projects currently underway, including a new, 10,000-square-foot branch library, and a new, \$5.3 million multi-purpose community center.

The new linear park, located along the west side of Flamingo Road, between Panther Parkway and Oakland Park Boulevard, features LifeTrail stations.



NEW LINEAR PARK OPENS

In January, Sunrise celebrated the completion of a 13+ acre linear park. Measuring 7/10 of a mile in length, the park is located along the west side of Flamingo Road, between Panther Parkway and Oakland Park Boulevard.

The park features two looped walking paths, as well as gazebos and benches. It's also the first Sunrise park to offer **LifeTrail** - a series of wellness stations designed to turn walks into more complete workouts. Each station provides health information along with a simple exercise apparatus for users of varied abilities. Sunrise also plans to incorporate LifeTrail stations into the design of future City parks, as well as add them to existing parks - such as **Welleby Park, Oscar Wind Park and Sunrise Tennis Club Park** - and other areas.

Under the terms of an agreement between Sunrise and Minto Communities, Inc. — the developer of the Artesia residential project under construction at the southwest corner of Flamingo Road and West Oakland Park Boulevard — the park was built on City owned land at Minto's expense. In addition to paying for the development of the park - a construction project valued at approximately \$1.2 million - Minto will also reimburse the City for the ongoing cost of the park's maintenance.